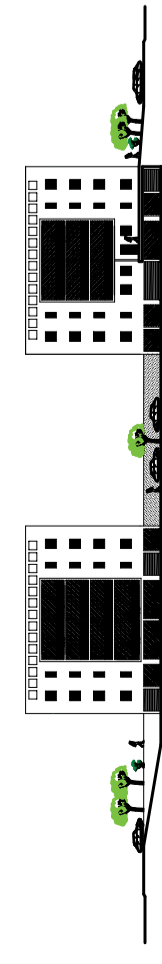


COMUNE DI MONTOPOLI IN VAL D'ARNO

PIANO DI RECUPERO "CALZATURIFICIO BERTINI"
IN LOC. SAN ROMANO VIA CAMPANIA N. 19 E 13.



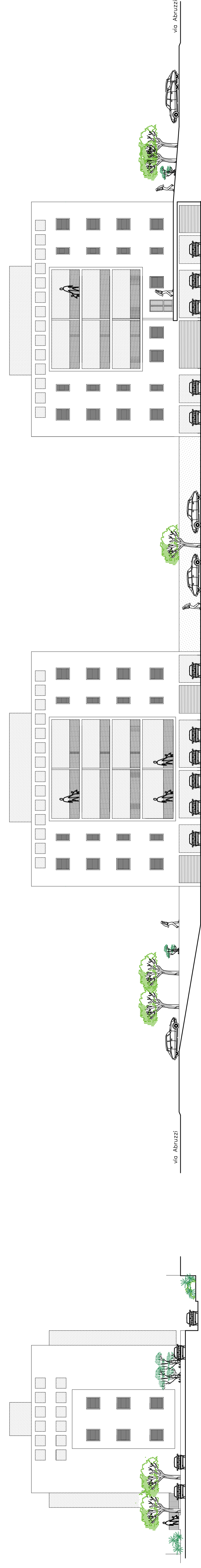
PROPRIETA': BERTINI SNC

PROGETTO: Arch. PAOLO SORDI

OGGETTO: IPOTESI PROGETTUALE

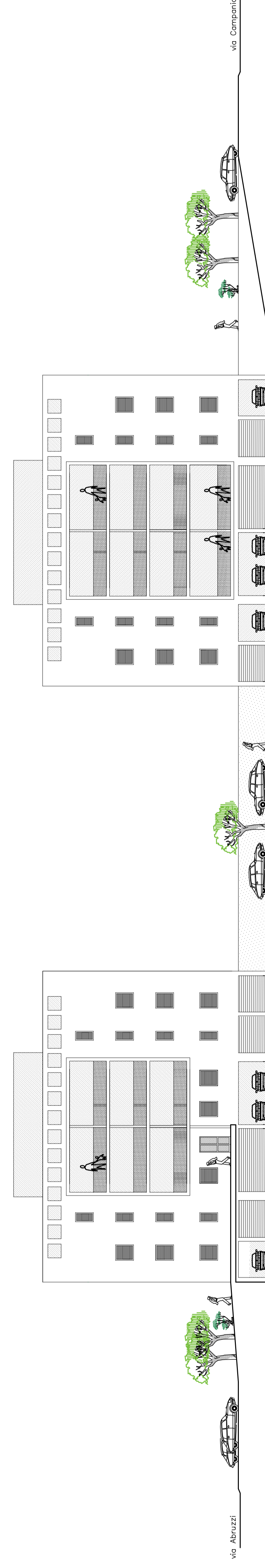
Prospetti e sezioni: scala 1/200

TAVOLA 7

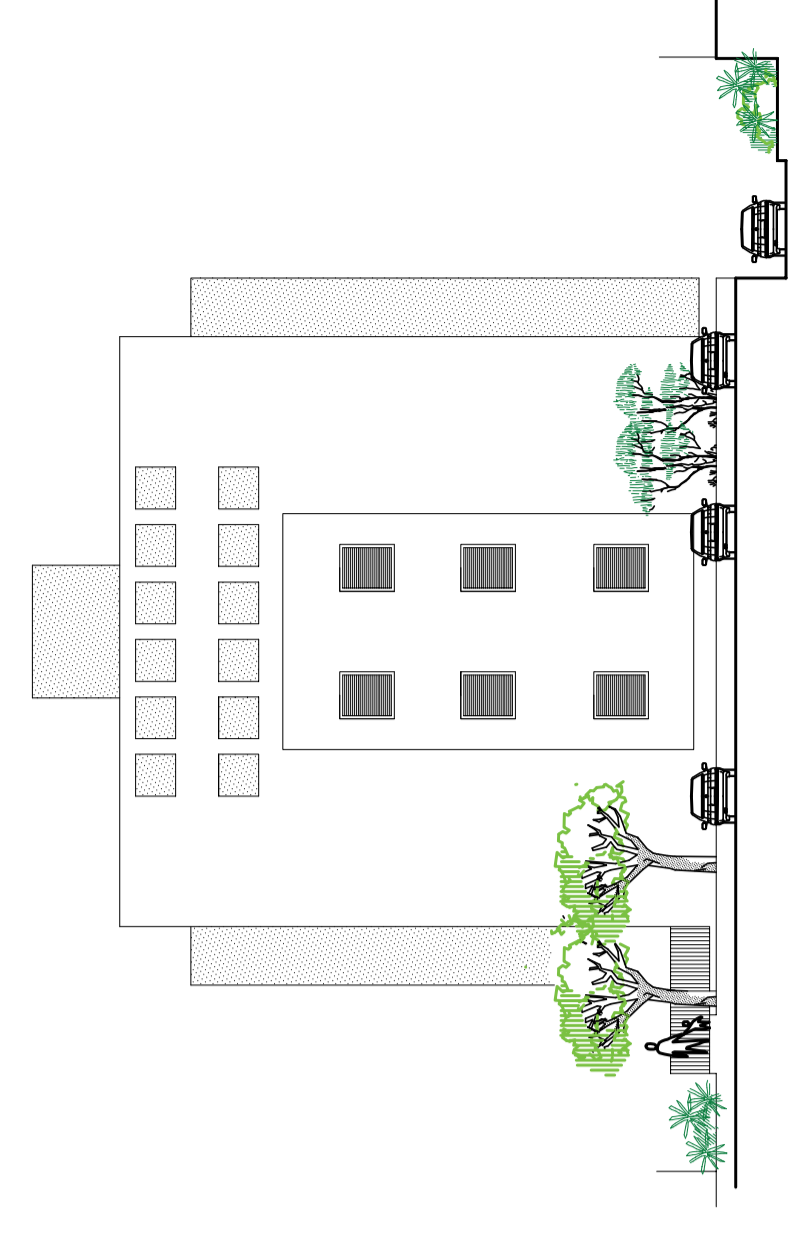


PROSPETTO NORD 1/200

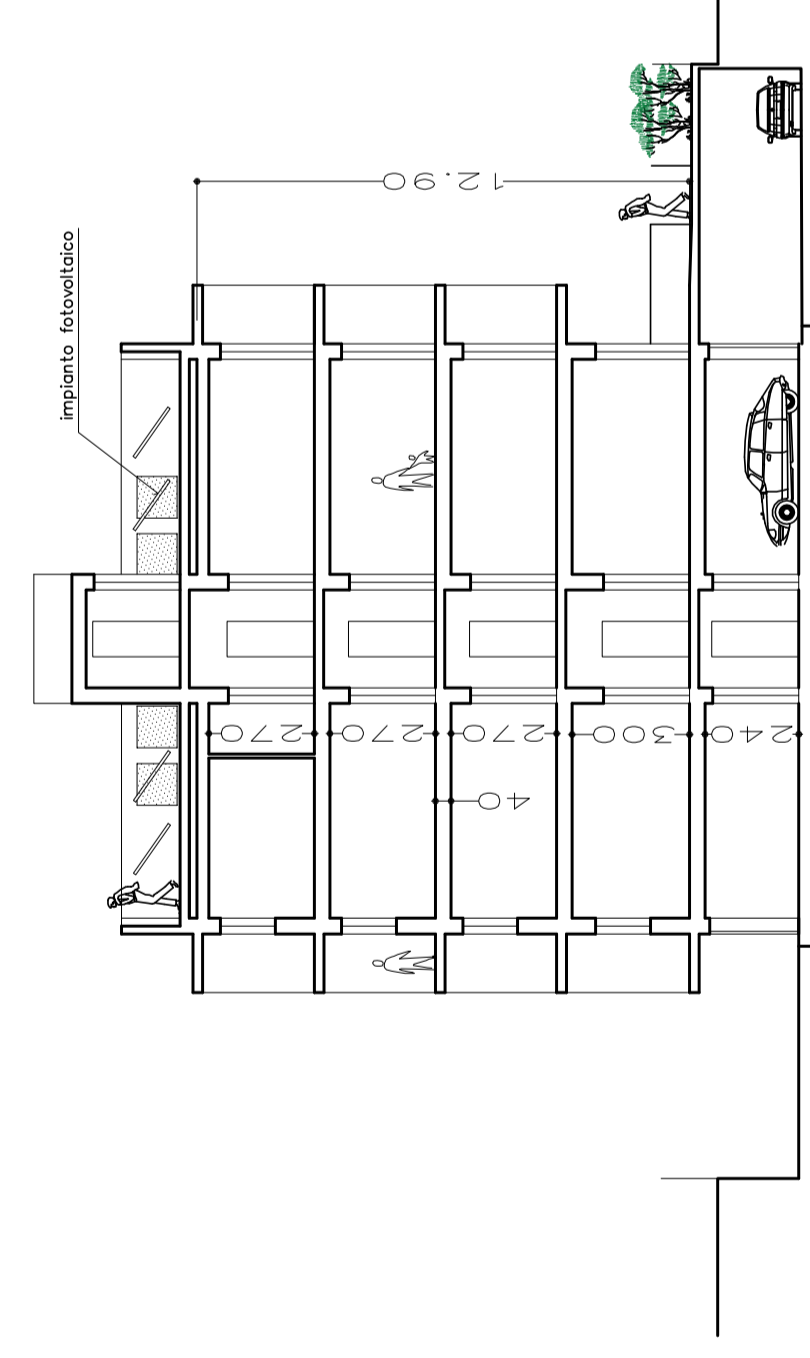
PROSPETTO OVEST 1/200



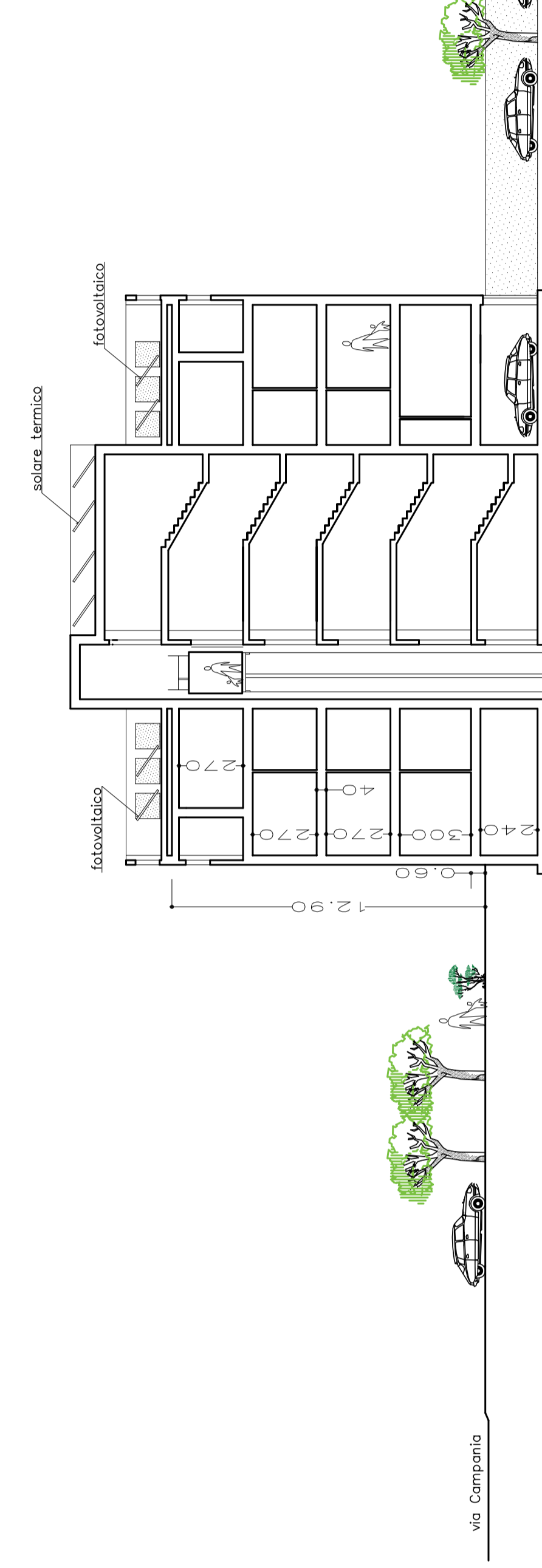
PROSPETTO EST 1/200



PROSPETTO SUD 1/200



SEZIONE S-S' 1/200



SEZIONE Z-Z' 1/200



Via Abruzzi