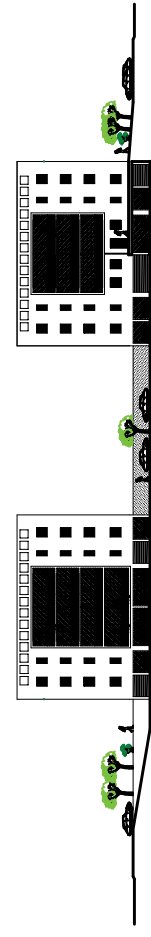
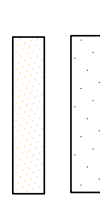


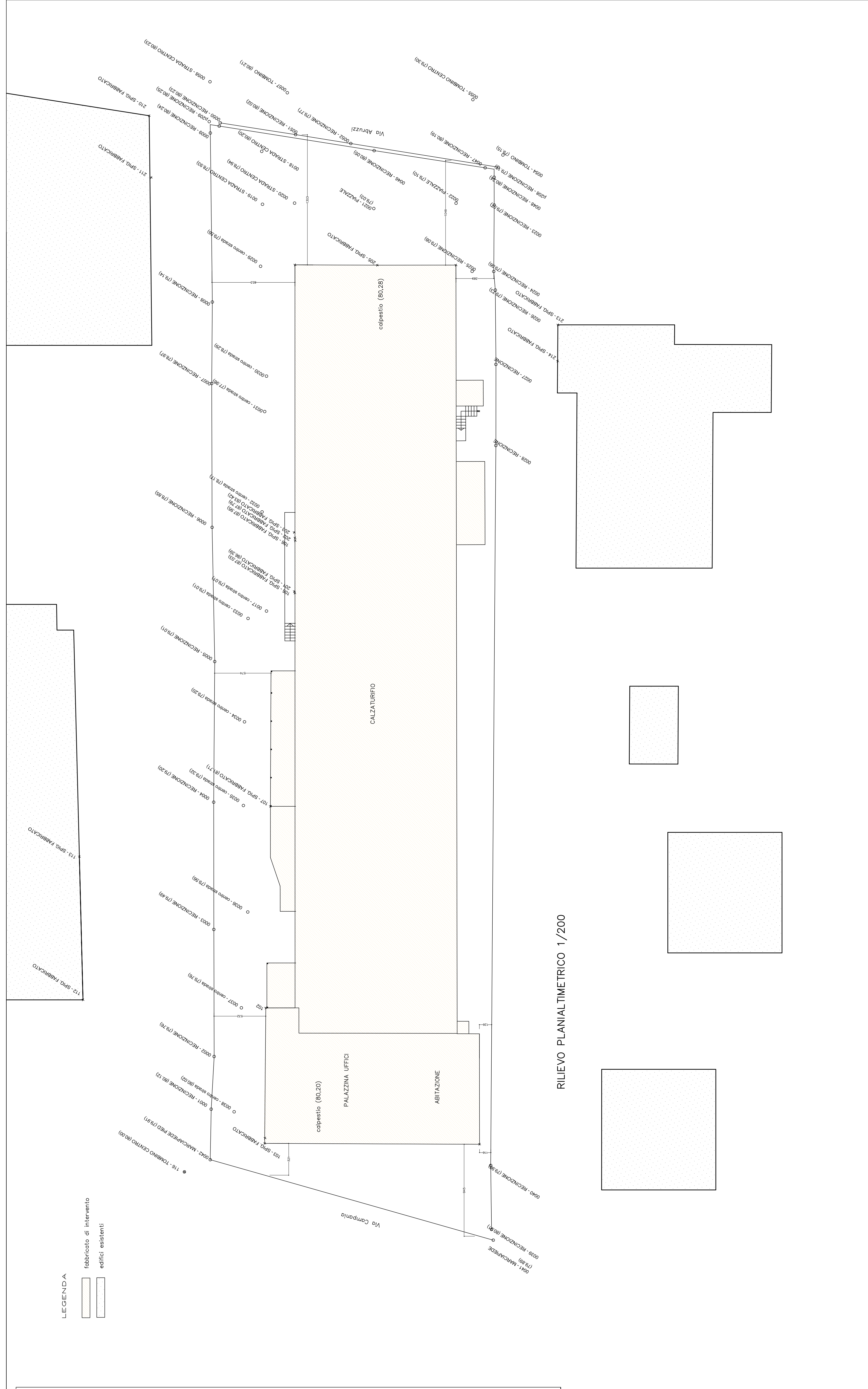
COMUNE DI MONTOPOLI IN VAL D'ARNO  
 PIANO DI RECUPERO "CALZATURIFICIO BERTINI"  
 IN LOC. SAN ROMANO VIA CAMPANIA N. 19 E 13.



PROPRIETA': BERTINI snc  
 PROGETTO: Arch. PAOLO SORDI  
 OGGETTO: RILIEVO QUOTATO  
 scala 1/200

TAVOLA 3

LEGENDA  
  
 ▨ fabbricato di intervento  
 ▭ edifici esistenti



RILIEVO PLANIALTIMETRICO 1/200